

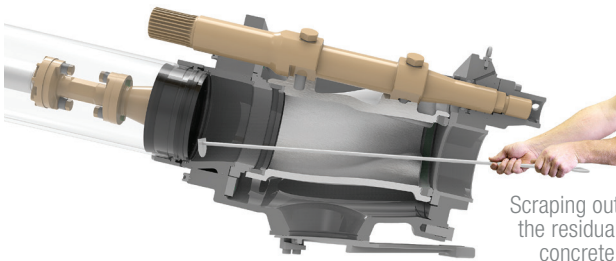
S 31 XT

TRUCK MOUNTED CONCRETE PUMP
WITH TELESCOPIC 5-SECTION PLACING BOOM



SCHWING®

STANDARD FEATURES



Boom

This 5-section XT telescoping boom provides versatility that is really two machines in one. In low overhead situations the boom needs only 18'-8" unfolding clearance, opening up jobs that are unavailable to other pumps.

Outriggers

X-Style front outriggers and telescopic rear outriggers set up in tight areas, maximizing reach on a wide variety of projects.

Pipeline

Patented Auto-Scissors pipeline adjusts to all boom positions without exceeding unfolding height, which is important when pumping indoors.

Auto Greaser

Maintains lubrication on Rock Valve™ and boom.

Rock Valve™

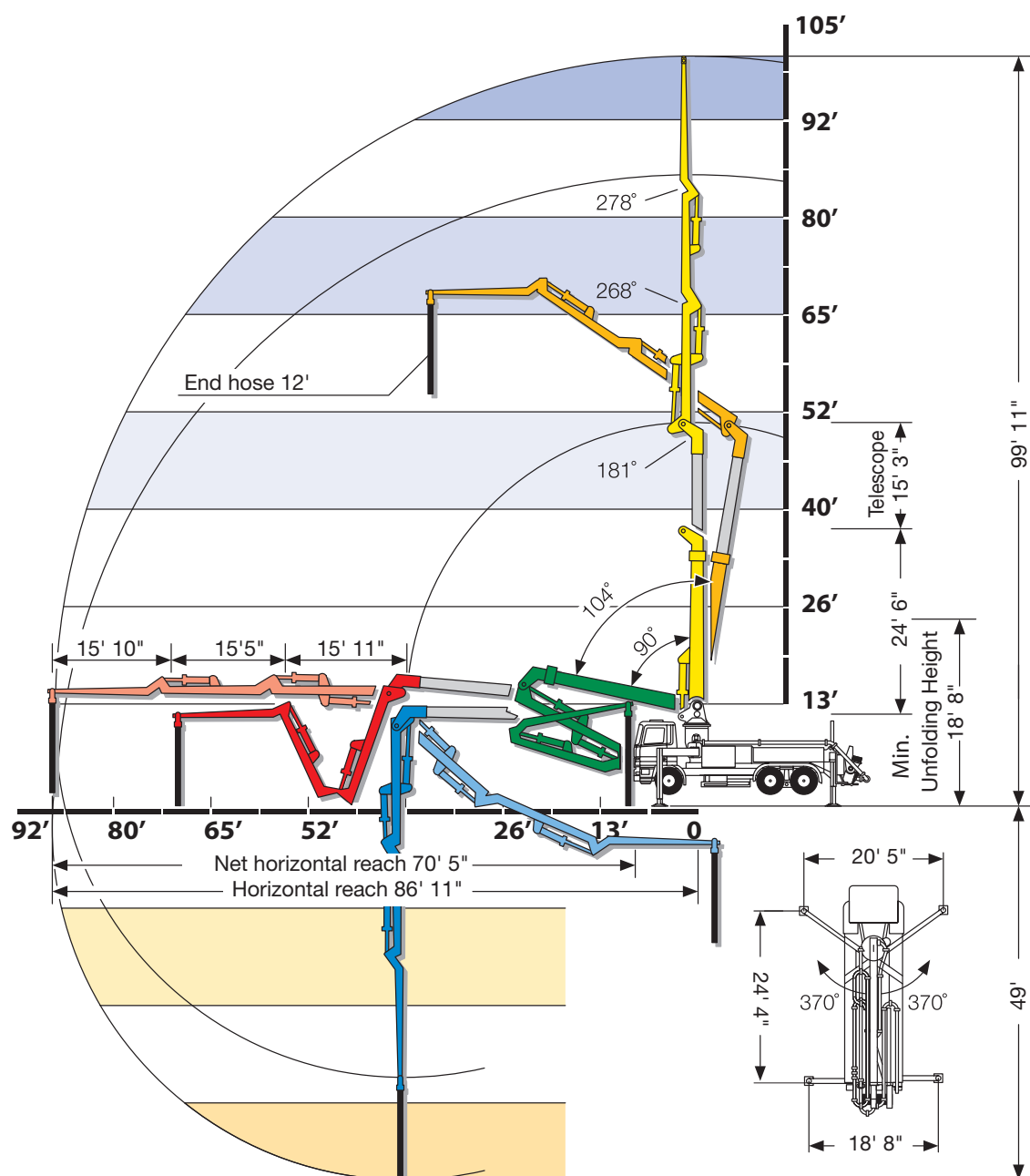
The Big Rock Valve™ features an extended housing to easily keep up with the requirements of high volume pours even with the harshest mixes. Carbide wear parts extend maintenance intervals.

Vector System

The Vector system allows two-way communication between the pump and the operator. Critical real-time operating data is displayed at the remote box. The remote control is lightweight, easy to use and long-lasting (up to 8 hours of battery life).

Hinged Sideboard

Fold down sideboards store extra pipe and clamps for line pours and add to the pump's all around capabilities. Pump residential jobs through the boom and commercial jobs through the discharge pipe attached to slickline.



Telescopic Action

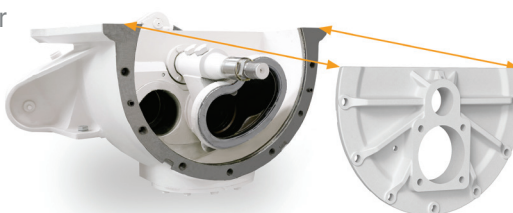
15'-3" of smooth telescopic action allows the operator to position the boom with pinpoint accuracy and reach 87-feet horizontally without exceeding the unfolding height and still pour back to the front bumper.

After completing low overhead indoor work, the S 31 XT transitions seamlessly to everyday outdoor jobs like walls and slabs. It sets up quickly with X-Style front outriggers and telescopic rear outriggers in tight areas. No other pump matches the reach and utilization of this one-of-a-kind machine that owners report is the most requested pump in their fleet.

EASY MAINTENANCE

Maintenance of the Rock Valve™ is simple, fast and safe!

The Rock Valve™ not only has a much longer life than other concrete valves, it is also easier to maintain. After removing the housing cover, the wear parts are easily accessible and can quickly and safely be replaced. Time-consuming adjustments are not required after replacement. The Rock Valve™ only contains 15 wear parts – half of competitors concrete valves.



SPECIFICATIONS

S 31 XT

2023-5 130/80 MPS

Pump Kit

	U.S.	Metric
Theor. Concrete Output Per Hour (cubic yards - cubic meters)	208	159
Maximum Pressure on Concrete (psi - bar)	1007	70
Strokes Per Minute	32	32
Material Cylinder Diameter (in. - mm)	9	230
Material Cylinder Stroke Length (in. - mm)	79	2000
Differential Cylinder Size (in. - mm)	5.1	130
Valve Type	B-Rock Valve	
Maximum Aggregate Size (in. - mm)	2.5	64

Boom Specifications

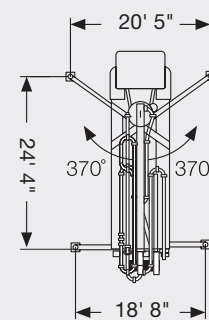
Pipeline Diameter (in. - mm)	5	125
Vertical Reach (ft.-in. - m)	99-11	30.5
Horizontal Reach (ft.-in. - m)	86-11	26.5
Net Horizontal Reach (ft.-in. - m)	70-5	24
Unfolding Height (ft.-in. - m)	18-8	5.7
Slewing Range (degrees)	730°	730°
End Hose Length (ft. - m)	12	3.5

Section Lengths

First Section - Retracted (ft.-in. - m)	24-6	7.5
First Section - Extended (ft.-in. - m)	39-9	12.1
Second Section (ft.-in. - m)	15-11	4.9
Third Section (ft.-in. - m)	15-5	4.7
Tip Section (ft.-in. - m)	15-10	4.8

Outriggers

Design	X-Outriggers, fully hydraulic, extension and jacking	
Front (ft. - m)	20-5	6.2
Rear (ft. - m)	18-8	5.6
Length (ft.-in. - m)	24-4	7.4
Load Front (lbs. - kg)	44,962	20,395
Load Rear (lbs. - kg)	35,970	16,316
Soil Pressure Front	441 psi w/o Dunnage 80 psi with dunnage	
Soil Pressure Rear	353 psi w/o Dunnage 64 psi with dunnage	



Specifications are subject to change without notice.



5900 Centerville Road | St. Paul, MN 55127 | TEL 1-888-SCHWING
FAX 651-429-3464 | www.schwing.com